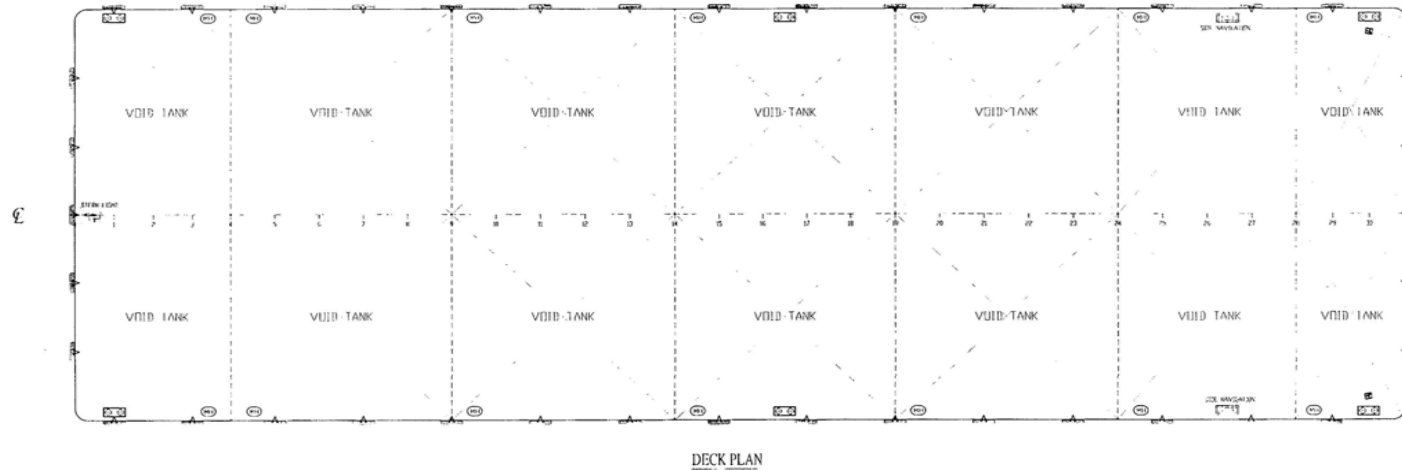
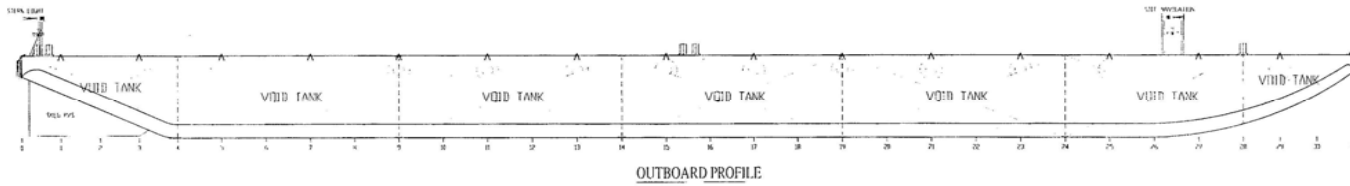




INFINITI MARINE PTE LTD

76 PLAYFAIR RD, LHK 2, #03-05, SINGAPORE 367996
TEL: 62864180 FAX: 62874180

STEEL FLAT TOP DECK CARGO BARGE - INFINITI 2



PRINCIPAL PARTICULARS

CLASS	ABS
PORT OF REGISTRY	INDONESIA
YEAR BUILT	2010
WHERE BUILT	INDONESIA
LENGTH (OA)	52.67m (180')
BREADTH (MLD)	18.29m (60')
DEPTH (MLD)	3.66m (12')
GRT / NRT	907 / 272
DECK LOAD	10 T / M2

Owner gives no warranty as to the correctness of the particulars contained herein