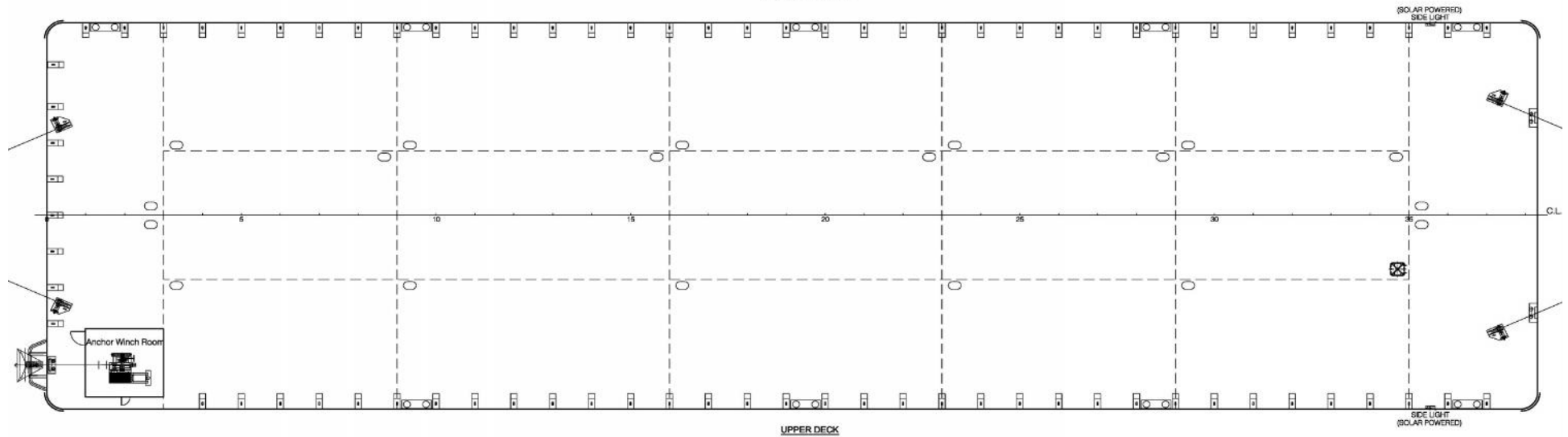
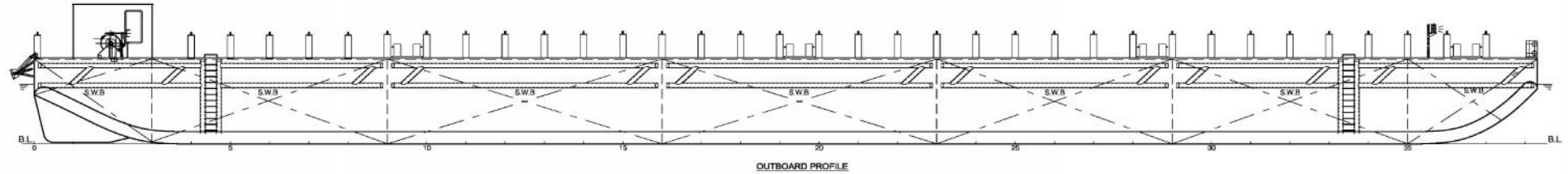


**STEEL FLAT TOP DECK CARGO BALLASTABLE BARGE - INFINITI 7 (WITH STANCHIONS)**



**PRINCIPAL PARTICULARS**

CLASS	ABS
PORT OF REGISTRY	JAKARTA
YEAR BUILT	2013
WHERE BUILT	CHINA
LENGTH (OA)	70.1m (230')
BREADTH (MLD)	19.5m (64')
DEPTH (MLD)	4.267m (14')
GRT / NRT	1554 / 466
DECK LOAD	15 T / M2

**DECK FITTINGS**

- 1 x Diesel Engine Drive Anchor Winch
- 4 x Towing Brackets
- 4 x Panama Chokes