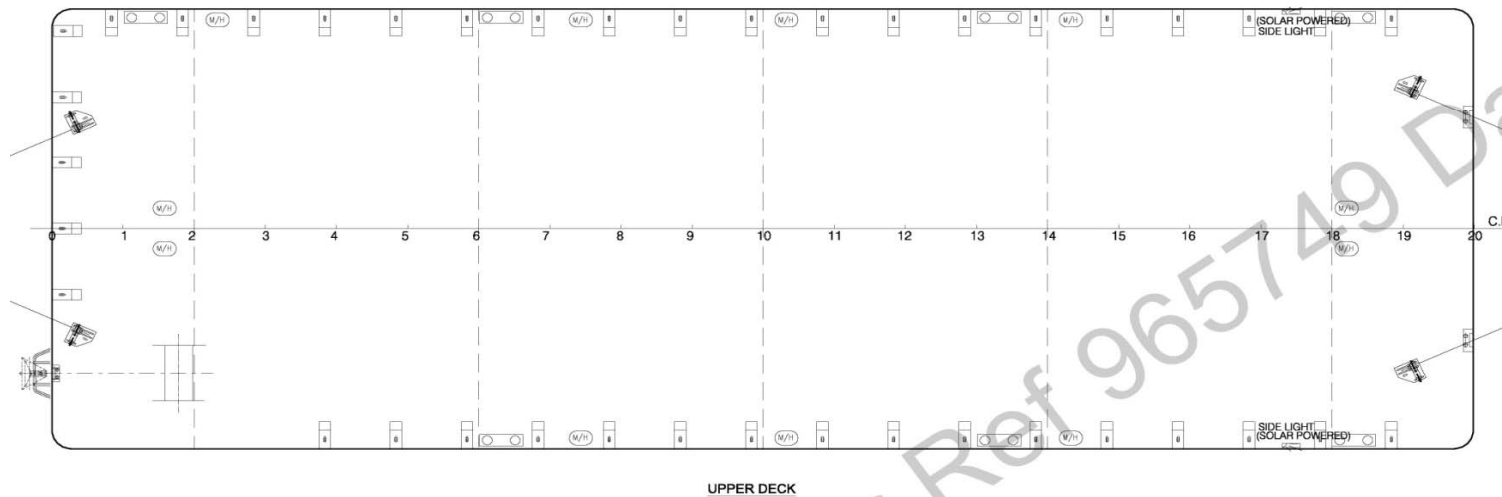
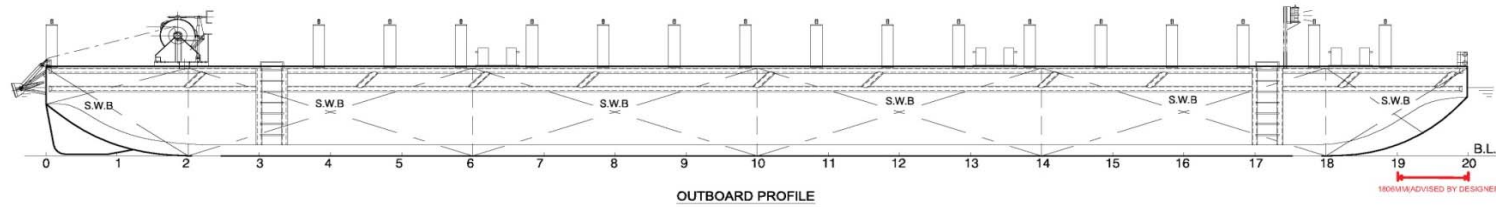




INFINITI MARINE PTE LTD

76 PLAYFAIR RD, LHK 2, #03-05, SINGAPORE 367996
TEL: 62864180 FAX: 62874180

STEEL FLAT TOP DECK CARGO BARGE - INFINITI 9 (WITH STANCHIONS)



PRINCIPAL PARTICULARS

CLASS	ABS
PORT OF REGISTRY	SINGAPORE
YEAR BUILT	2013
WHERE BUILT	CHINA
LENGTH (OA)	36.57m (120')
BREADTH (MLD)	12.19m (40')
DEPTH (MLD)	2.43m (8')
GRT / NRT	270 / 81
DECK LOAD	10 T / M2

DECK FITTINGS

- 1 x Diesel Engine Drive Anchor Winch
- 4 x Towing Brackets
- 4 x Panama Chokes

Owner gives no warranty as to the correctness of the particulars contained herein